

ITCHEN Valley News

Issue 107 November 2022

Avington, Easton, Itchen Abbas, Martyr Worthy and Abbots Worthy



YOGA

with *Dionne*

—>>>><<<<—



Need motivation to take care of your wellness goals together with increasing your strength and flexibility?

- Yoga classes at Easton Village Hall
- Online live zoom classes & library
- Private 1:1 sessions & small groups
- Corporate Yoga
- Teen Yoga
- Yoga Alliance 200hr Teacher 2007

Call: 07961 888676 Email: om@dionneyoga.com
www.dionneyoga.com

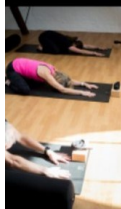
STN·MILL

HEALTH & FITNESS

—ALRESFORD—

GYM | BARRE | YOGA | PILATES | CYCLING | MEDICAL

FIRST CLASS DEPARTS HERE



**FREE PASS
AVAILABLE**

- Gym session
- Class pass



CONTACT US

info@stationmill.co.uk
01962 735110
Station Mill, Station Road
Alresford, SO24 9JQ



Retrofitting your home means lower energy bills and a smaller carbon footprint

Our Retrofit Plans give you detailed, tailored, independent advice on insulation, solar panels and heat pumps.

"Having our house inspected and Ian's report has given us the push to get on with making our house more eco-friendly."
Chris & Lionel from Romsey



To find out more and register your interest visit
www.superhomes.org.uk/winchester

WinACC has been taking action on the climate crisis since 2008.
This project is completely independent of installers and is to help local homeowners find out how they can make their homes more energy efficient.



Winchester Area SuperHomes is a non-profit project run by local registered charity,
Winchester Action on the Climate Crisis. www.winacc.org.uk



WELCOME to the Valley News

Our cover photos usually show either Valley residents having fun in various ways, or attractive plants, animals or scenery. This month it shows one of the many people who work in unsung ways to help our community. For those who use the bus service an effective bus shelter is a useful addition to their comfort - especially in winter. That mention of winter is as near as I want to come to complaining about the weather! However, on the subject of busses, if you would find it helpful to have the dates of school and college terms as well as the bus times on page 40 please let us know.

November will start with a bang as always, the Easton Fireworks are on the actual 5th this year hence the red letters in What's On. The other events are all indoors.

If you are not a member of the Upper Itchen Valley Society I urge you to join. As well as doing very useful work they also give good parties!

The Environmental Working Group has been busy and the report (pages 18 - 20) on the survey of attitudes to climate change and the problems facing the natural world is worth reading. The Group hopes it will make you think about what your household can do, or do better - see the advertisement for WinACC on the left. Even with all the dramatic events in Europe and Westminster as I write, the climate change issue is still the biggest problem facing the world.

We have Clubbing in the Valley - yes, tennis is a winter game for the suitably clad. Food Spy waxes

enthusiastic about a nearby pub and our own local, The Plough, has just been awarded Tripadvisor's

Travellers Choice because it is in the top 10% of restaurants worldwide - congratulations to Ashley and his team. It is too soon to mention Christmas, but the Easton Pantomime will only be four weeks away when you get the magazine: now there's a scary thought for all those brave actors busy learning their lines! See page 31 and book your tickets.

My thanks to all contributors. Next month's editors are the Nathalie and James Paterson.

Charlotte Appleby



Itchen Valley News

Chief Editor Mary Hogg

Editors Charlotte Appleby, Verity Coleman, Jen Gaster, Catherine Hahn, Brigid McManus, James Paterson, Nathalie Paterson

Advertising Jenny Sloan

Distribution Lyn Jones IA&A 07899 922221
Gilly Greenwood E&MW 779540

Treasurer Henry Labram

For editorial enquiries, articles, letters or comments, please email:

itchenvalleynews@gmail.com.

For advertising enquiries, please email:

itchenvalleyadvertising@gmail.com

Postal address: Itchen Valley News, Chilland Cottage, Chilland Lane, Martyr Worthy, SO21 1EB.

Copy for the December issue should be received by Tuesday 15 November.

All material is published in good faith and the Valley News cannot be held responsible for any information given or views expressed; neither can it be liable for any loss arising from the use of any information or advertisements contained herein. The Editorial Team reserves the right to refuse or amend articles or advertisements submitted for publication.

Printed by Greenhouse Graphics of Basingstoke.

Cover photo taken by Patrick Appleby and other photos from various contributors.

What's On

Saturday 5 November

Fireworks, bonfire, food, drinks and kids fun at the Easton Village Hall from 6pm. Best Guy and drawing competition with prizes. Entry by cash donation.

Sunday 6 November

There will be a special service for those who are mourning a loved one on Sunday, 6 November at 5pm in St John's Church, Itchen Abbas. This will be an opportunity for contemplation and reflection - everyone is most welcome.

A Bereavement Course is planned from the end of January - look out for further details in the next issue of the News.

Elaine Labram

Tuesday 8 November

7 for 7.30pm Martyr Worthy Village Hall
Upper Itchen Valley Society 51st Annual General Meeting 2022

Members of the Society are invited to attend the AGM. After a glass of wine, the speaker will be Rob Nicholls, the Estates and Conservation Manager from the Hampshire and Isle of Wight Wildlife Trust who will talk about their work in the Valley. The formal part of the meeting will follow.

The Society was founded in 1970 at the time of the M3 construction to safeguard the interests of the Itchen Valley. We are not a vocal pressure group but work in the background attending consultations, commenting on planning and environmental projects and watching out for other threats. Members can raise concerns with us which we follow up. All

residents of the Valley are eligible to join – you can do so at the AGM - the cost is a one-off subscription of £20 per household. Please do come and hear about our work!

Elaine Labram

Saturday 12 November

6.30pm for 7 – 8.30pm at St Mary's Church, Twyford, SO21 1NT.

Winchester College Quiristers will be singing a mixed programme of religious and popular music in aid of Winchester GoLD which provides support for adults with learning disabilities.

Tickets: £18 (to include a glass of wine & light refreshments), Quirister parents £12, children under 12 free. Available from Mrs R Nell: 01962 861448, email: rosnell83@gmail.com

Sunday 13 November

The Royal British Legion Itchen Valley Branch

The Annual Remembrance Sunday Parade will be held at the Martyr Worthy War Memorial on Sunday 13 November 2022 at 10.50am. All members of the Royal British Legion, and anyone else who has served are invited to attend. We plan to form up at 10.45am. Please wear medals if you have them. The RBL badge should be worn below the poppy. The wearing of hats and carrying of umbrellas is at the discretion of individuals. In the event of (very) adverse weather there will be no parade, but members will be invited to gather at the War Memorial for the two-minute silence and wreath-laying. The Remembrance Service will be held at St Swithun's Church, Martyr Worthy shortly after the two-minute silence. This service will be ecumenical and therefore available and designed for everybody.



EASTON FIREWORKS

SATURDAY 5TH NOV

FROM 6PM AT THE VILLAGE HALL

ENTRY BY CASH DONATION

HOT-DOGS BAR



There will also be short Acts of Remembrance at 10am at Avington, Easton and at Itchen Abbas where it will be followed by a short family service. See page 28.

Poppy Appeal 2022

Every day, our Armed Forces work tirelessly and make sacrifices on our behalf. This year also marks the 40th Anniversary of The Falklands War. The Royal British Legion will always ensure our veterans get the support they deserve when they leave the Services. Every poppy makes a difference to the lives of our Armed Forces community. Door to door Collectors have been at the heart of the Poppy Appeal for over 100 years and collections will again take place in the Valley this year from 27 October. Please be assured that the health, protection and well-being of Collectors and the public is and will



remain a priority. Every person, every donation and every poppy counts. The JustGiving page will be repeated this year. To make an online donation that will be identified as coming from the Valley go to: www.justgiving.com/page/itchenvalley-2022
Poppy Hughes

Thursday 24 November

Alresford Art Society: A talk by Scott Anderson on The Pre-Raphaelites at 7.30pm in Bishop's Sutton Village Hall, SO24 0AH. Non-members welcome – admission £3. For further information: 01962 733031 or visit www.artsociety.alresford.org.

Saturday 3 December Itchen Abbas Primary School Christmas Fair,

Itchen Abbas Village Hall.
2pm-4.30pm. All welcome
Card and cash payments accepted for entrance and stalls
Lesley Mallarky

14 - 17 December

Easton Pantomime is back - Oh yes it is!

Wednesday 14 December to Saturday 17 December in Easton Village Hall. Book early, especially if you want to take children to the Saturday 2pm or 6pm shows which always sell out fast. Eastontickets123@gmail.com or 779328 from David and Mary Purser

Save the Date

Saturday 28 January

Spring into 2023 and celebrate the end of January from 7pm – 11pm at Easton Village Hall. Live Music From 'We are Robot', pay bar, bread & cheese (included in the ticket price).

Tickets £20 available from:

Sally Stone Tel:-01962779283

email:- sally15@btinternet.com

Tickets will not be available on the door.

Alresford Surgery News

Alresford Surgery Patient Forum -

Thursday 17 November, 6pm

General Practice in the 21st Century

Primary care is now provided by a number of different health

professionals, with GPs being just one part of a much wider team. We have a number of different skilled professionals working here at the surgery and we would like to invite you to a meeting on Thursday 17

November at 6pm to hear about the different roles and services and some of the people providing healthcare at Alresford Surgery or in our locality.

Old Railway Line

To me, this picture sums up exactly what people are feeling about the Old Railway Line walk.



The weeks of work have devastated the path which is now soulless but at least the fear of a branch dropping on the head has been removed! I look forward to spring when the regeneration will begin. Hopefully dormant wild flowers bursting into bloom, having returned to sunlight from shade, and new tree growth!
Jenny Sloan

Clubbing in the Valley

Worthy Park Tennis Club

Some of you may already be aware of our small tennis club in the Valley - Worthy Park Tennis Club. Based at Prince's Mead School, it is well located for us all. The two courts are in great condition and have a fabulous view too from their elevated location.

It has been open for over ten years now - with some of our members being with us from the beginning! The Club Coach Rachel Magory has been with us from the start too and

currently runs coaching sessions on weekends for all ages and abilities. During the summer months the program expands to include evening coaching and club nights. Most school holidays we run popular kids camps too! We are always looking for keen and/or fair weather players to come along and meet other Valley players. Our very affordable membership fees and no court fees means you can play as little or as often as you like. Please visit our website for



more information or contact Coach Rachel with any questions!
www.worthyparktennis.com
Rachel Magory

A Service of Prayer and Reflection - for those recently bereaved

light a candle
join us in prayer

Sunday 6 November at 5pm
St John's Church, Itchen Abbas

*We hope that the service will be
a fitting tribute to those who are
loved but seen no longer.*

*We very much hope you will be able to come,
bringing any friends and relatives you wish to support you.*





Perfect for any celebration
www.thebarnatavington.co.uk



Your local 9 hole course
www.avingtongolf.co.uk



PRINCE'S MEAD

Welcome to Prince's Mead

AN INDEPENDENT CO-EDUCATIONAL SCHOOL FOR CHILDREN AGED 3-11 YEARS, WINCHESTER



WINCHESTER

WOOD FLOORS



BEAUTIFUL NEW WOOD FLOORS ~ EXPERT FLOOR SANDING AND RESTORATION
BESPOKE CABINETRY

w: winchesterwoodfloors.co.uk t: 01962 733016 e: info@winchesterwoodfloors.co.uk

Winchester Wood Floors Ltd, 3 Vernal Cottages, Spring Gardens, Alresford, SO24 9QB

Lost and Found .

I was only going to the greenhouse for a few minutes look round the garden.... did not need gloves. Forgot about my ring. Silly me.

Two hours later with a trug full of goodies, washed my hands no ring. It had simply disappeared. An instant flashback to when, where and why it was bought then I panicked! Don't touch anything! Don't move anything! I know exactly where I have been. But still no ring.

Next coherent thought: The Itchen List. People are so kind (had it happened to them?). I can confirm there are quite a lot of people of all ages in the Valley with metal detectors and it seemed as if they all got in touch, willing to help. I am very happy to report that ring was found – in the hand towel! So embarrassing. But all's well that ends well.

Lesson One: it may not be exactly sensible to advertise a valuable ring is in your garden somewhere!! Oops. Not everyone is a 'good 'un'!

Lesson Two: If you take a torch out at night, a 'gleam' in the dark may direct your search. This apparently also works with lost contact lenses.

Lesson Three: Do not wear special or valuable jewellery whilst working in the garden. Or washing hands. Ever again.

Caroline Coleman

I have a lost ring story of my own, I suspect many of us have. Do you feel like sharing your story with Valley News readers? We are very happy to hear from readers, young and old. I will confess to mine if more than one reader emails to ask for it - now there's a challenge! Fictional versions also welcome, labelled as such.

Editor of the month

Welcomes

Congratulations to Libby and Jim Christie of 6 Off Church Lane, Martyn Worthy on the safe arrival of their baby daughter, Grace Elizabeth Jane, born 21/09/22 weighing 9lb 10oz!



Mike Clare and Josie Roach have moved from Farnham to live in 3 Chapel Lane, Easton. Mike is an electrician and Josie an events manager. They have just got engaged. Many congratulations.

From our MP

Thinking back to the summer, there was only one story in town – the urgent need to help households and businesses with eye-watering energy bills expected this winter. Every news bulletin screamed for action and my inbox was full of constituents understandably asking what help might be available. Then, in the first few days of September – before the world changed and we lost our beloved late Queen – the new Prime Minister announced the single biggest Government intervention in peacetime in the form of the Energy Price

Guarantee. To recap for moment, the global rising cost of energy - caused in part by the war in Ukraine - created unprecedented price rises. Energy bills were due to rise by £6,500 so direct support measures had to be announced by the government. As a result typical households in the Itchen Valley will save significantly on their energy bills until next Spring on top of the £400 cash grant towards your domestic energy bill this autumn. This latter comes in six instalments over the next six months and will either be paid directly (as cash) into your bank account or credited to your electricity bill. That depends on your supplier but you do not need to take any action to receive. Sensible energy saving measures are never a bad idea and there's lots of help out there to advise on ways to save energy in your home. Furthermore, a £300 one-off cost-of living payment is on its way to pensioners who receive the Winter Fuel Payment.

When we announced this help, we promised something equivalent for non domestic properties and I spent time in the constituency talking to businesses, charities, schools and hospitals to ensure I could feed their need for help into Ministers. The Energy Bill Relief Scheme quickly followed (announced as soon as possible after the period of national mourning was over) giving a discount on wholesale gas and electricity prices worth up to half the price of expected energy prices this winter. I know this will be a great help locally.

This discount is initially only until the end of March but I will be lobbying to see it scaled back for big firms – I don't believe Amazon need the help even if they received it at the beginning due to the need to get help out there fast –

and focused on small business in particular from the Spring.

There are still, however, gaps and as I write I am still pressing Ministers for clarity on how this help will achieve equivalence for park home owners, others who pay their rent and bills to one landlord and to those who are 'off grid', because at present they're not getting the same help as everyone else and that's not fair.

Finally, I may no longer have children at the school, but my job took me into the wonderful Itchen Abbas Primary School last month. I spent time chatting with Mr Bogan's Year 5/6 class and then had a session with the school council to help them in their work this year.



Steve Brine

MP for Winchester & Itchen Valley

Susan Glasspool 1935 - 2022

Sue Glasspool, together with her husband Jim, was a part of the fabric of life in the village of Itchen Abbas for nearly 50 years. Sue was born in 1935 and educated at Queen Anne's School, Caversham. She was the first member of the family to go to university, gaining a BSc in physiology, chemistry and physics from Bedford College, London in 1956. She began her career at the Wellcome Foundation Research

Laboratories, investigating treatments for diabetes and haemophilia. In fact, Jim's first glimpse of Sue was of a tall and glamorous young woman at a cocktail party, wearing a lab coat to protect her cocktail dress while breaking up an ice block. She made a memorable first impression. They married in 1959 at St. Luke's Church, Chelsea. Jim's job at Shell gave them a peripatetic lifestyle for a number of years, making homes in Birmingham, London, Sweden and, later, Canada. Sue learned Swedish and raised their three children: Andrew, born 1960; David, 1961; and, finally, Rosalind, 1968.

Sue and Jim bought West Hays in Itchen Abbas in 1973. This became their main family home for the rest of their lives, where Sue and Jim's nine grandchildren, three great grandchildren and an ever-changing cast of labradors loved to play in the gardens. Sue's love of fishing and the natural world were evident in the countless hours she spent on the River Itchen and walking dogs. She was at home on a riverbank, whether in Hampshire or Scotland, and still holds the family record for the largest salmon.

Sue's interest in politics started in 1974, when she became a member of the Itchen Valley branch of the Conservative Association. Politics took a back seat when they moved to Canada, where she retrained at Toronto University and continued her laboratory research career voluntarily. On return, in 1979, she took a position in the Tenouvis Foundation Faculty of Medicine at Southampton University working on leukaemia research. In 1983, Sue became a City Councillor and went on to become a Cabinet Minister of the County Council. She



had a busy and amazing year as Mayor of Winchester from 1993 to 1994. A lasting legacy of this is the Princess Royal Trust for Carers in Hampshire, which she set up and remained their president until her death. She held many governorships and trusteeships, but a place very dear to her heart was the Hospital of St Cross where she was a trustee for over 20 years. She became a Deputy Lieutenant of Hampshire in 1996 and was made an honorary Alderman of Winchester in 2010.

Sue was also active on the PCC and loved to attend services at the village church, becoming a keen zoom attendee during lockdown. Sadly, Jim died in September 2020, a very difficult time for Sue to face during the pandemic. As Sue's health became increasingly frail (in body only, her mind was as bright as ever), she made the decision to move to Scotland to be near to her daughter Ros. Although in failing health, Sue had a happy last 15 months living just a few minutes from Ros and her family. Sue is buried next to Jim in the churchyard of Itchen Abbas Village Church and is remembered with much love by all her family and friends.

Queen Elizabeth II in Winchester

1986

This photo was taken when Her



Majesty opened the new Nightingale wing at the Winchester Hospital in November 1986. It was a very long day as we had the opening of the new Flowerdown Barracks in the morning. The Queen was much smaller and daintier than I expected, perfect skin, twinkly eyes and a wonderful smile. You can tell by the sloppy look on my face that I was spellbound! It was a grey gloomy day but she lit up the room (I know it's a cliché but she did).

This was the first time I had come across the 'eating with Royals thing' when we had lunch later in the officers' mess. When the Queen puts down her knife and fork all the plates are cleared. We had just two mouthfuls of delicious lamb cutlets when our plates were whisked away!

Sue Gentry Mayor of Winchester 1986-1987

1993

On Friday 18 November Her Majesty was attending a service in Winchester Cathedral and opening the new Visitors Centre nearby so I went along to see her.

When I arrived there were metal

barriers up but as yet no spectators, just a few policemen. It was a lovely sunny morning though rather cold. Privileged guests were already gathered outside the Cathedral awaiting entry. Some of the ladies' fashions looked very fetching. Gradually more spectators turned up and a policewoman came over and stood in front of us. She explained that they were not permitted to look at the Royal party as they had to have all eyes on the crowd. I got out my camera to record the events as they happened. By now the place was crowded with spectators including several from Itchen Abbas. At approximately ten past eleven the Mayor's Jaguar drew up outside the Cathedral and Susan Glasspool alighted with her husband Jim, also Itchen Abbas residents. Suddenly someone exclaimed "Here she comes!" and a huge black Rolls Royce came into view. The Queen emerged, accompanied by Prince Phillip. She was wearing an extremely smart, deep violet coat with matching hat and shiny black court shoes.



Everyone clapped and cheered and after a few words with the Mayor, the party entered the cathedral to attend the service.

A young lady from Radio Solent came up to us and enquired if we had seen the Queen arrive. We said yes, so she asked if we would be kind enough to answer a few questions. Being broadcast live, it was all rather fun talking into a microphone knowing that people would be listening to us on



THE ART OF FIRE

Over 100 stoves on display
Supply/Full installation available

Kingsworthy
Foundry

Tel: (01962) 883776
Email: info@kingsworthyfoundry.co.uk
www.kingsworthyfoundry.co.uk

their radios. A shame we couldn't hear the broadcast ourselves.

At midday, things livened up again. A small group of people led by the Mayor approached from the side entrance of the cathedral. Suddenly the central cathedral doors opened and out came The Queen amidst clapping and cheering before she and Prince Philip disappeared up the steps and out of sight into the Visitors Centre. What happened next was the high spot of the occasion for me! At 12.50 the Mayor and other dignitaries emerged and shortly afterwards the Queen and Duke of Edinburgh appeared. The crowd clapped and cheered as she approached. All the congregation from the cathedral had formed up directly opposite us in front of the main entrance. I hoped the Queen would come in our direction and she did! She was carrying a bunch of white flowers and smiling broadly. We said "Good morning" as she walked past and she remarked to us all in general "You have had a long cold wait" whereupon we emphatically replied "Yes!"

It had been a memorable day and I was lucky enough to see myself on Meridian TV that evening.

Arminel Tottle

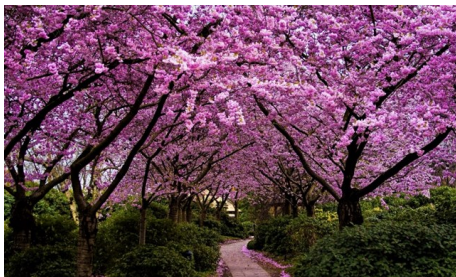
The Valley Gardeners

We certainly did take a trip to Japan in spring, but not literally; rather by courtesy of our speaker in October, Rosemary Legrand. In 2007 Rosemary visited Japan in Spring and this was the title of her talk. Charmingly, she began our talk with a recording of a Japanese song sung by a soprano voice, just to get us acclimatised to the Japanese culture. Rosemary's tour started in Tokyo and ended in Nagasaki. Enroute, largely following the north coast, she visited many botanic gardens and

temples.

Rosemary Legrand has been lecturing for 30 years and her life is steeped in horticulture. Her father was a renowned azalea and rhododendron hybridist and Rosemary has followed in his footsteps. Her travels have been a rich seam of lecture material and she takes her own photographs, so we were revelling in her glorious images of spring - flowers and trees.

The dedication and precision of the Japanese gardeners was highlighted and



the man-hours spent shaping, pruning and caring for the plants was truly extraordinary. Where we might use shears or secateurs, the Japanese gardener will use tiny scissors to cut each leaf separately and ensure a perfect result. We also saw a great many stone lanterns in the gardens and learnt that these embody the five elements of Buddhist cosmology. The closest piece to the ground represents the earth (chi); the next part on top of it represents water (sui). The portion encasing the lantern's light represents the fire (ka). The air (fu) and the spirit (ku) are symbolized by the two upper sections that are close to the sky.

Our tour came to an end in Nagasaki which we all know



OCEAN ROOFING

- Gutter Maintenance
- Roofing repair
- New Flat Roofing
- Chimney Repair

www.oceanroofing.co.uk
davidpike1@btconnect.com
01962 779690

PETER G FISHER

GAS SAFE registered 219242

Plumbing, Heating and Gas Engineer

33 Victena Road, Fair Oak, SO50 7FY

Phone 02380 600834

Mobile 07860 401304

Credit and debit cards accepted

Contemporary Catholic Co-educational 3-13 Day & Boarding

“Exceptionally well-adjusted and kind children”

Tatler Schools Guide



FARLEIGH

Flexible school bus service, covering Winchester
Current pick-up from Headbourne Worthy (SO23 7LD)

For further information, please contact the Registrar, **Sarah O'Rorke**
E: admissions@farleighschool.com T: 01264 712838 to book or to arrange a tour

ALRESFORD PILATES

Classes held at Station Mill
and also Online

Close supervision and
individual support

Further details -
www.alresfordpilates.co.uk

Call/text Sally Hogg - 07771 522665

Email: sallyhogg@btinternet.com

ALRESFORD FINANCIAL

MORTGAGES • PENSIONS • INVESTMENTS
WEALTH MANAGEMENT • EQUITY RELEASE

01962 798166
www.alresfordfinancial.com



as an infamous place. But more positively, Giacomo Puccini set his opera *Madame Butterfly* in that city and to finish her talk, Rosemary played us one of the arias from this most moving of operas. As they say, there was not a dry eye in the house

Catherine Hahn

From the Rectory

I don't know about you, but during September I found myself really resisting the idea of the arrival of autumn.

Perhaps it was the summer's heatwave that I was not willing to say good-bye to? Yet I guess that for many of us, as the clocks go back and we enter November, the thing we are resisting all the more is the approach of winter. How will we - as a nation and as individual households - navigate the coming months? Will the weather be kind to us or will there be frequent power-cuts?

If you feel you can live without the government's fuel-allowance this year, can I encourage you to consider donating this to the Winchester Villages Trust? The Trust, which is supported by many locals, is there to help individuals or families living in the rural areas of Winchester who may be suffering hardship during difficult times such as these. Help is available immediately and is not conditional on income or any other measure. All discussions will be kept in the strictest confidence. Further information about donating or requesting assistance can be found on our website: www.itchenvalleychurches.org.



We also want to offer a place of warmth and welcome during the winter months for those who might prefer to leave their own homes and meet others in an already-heated space. For various reasons the church in Itchen Abbas is heated on Monday, Wednesday and Thursday mornings during term time; so we would love people to think they can pop in on those days - to pick up a coffee or tea and to enjoy some company. Beccy Clark, our Parish Administrator, is in the church on those days, and I myself hope to be there most Thursday lunchtimes: it would be lovely to meet you and to have a chat.

Meanwhile on Sundays - once a month, and again in St John's Church, Itchen Abbas - we are developing a new service pattern. For those who like a quiet, reflective service, there will be a 'said' service of Holy Communion at 8.30am - followed by coffee and croissants and a further few moments looking at the Bible Readings for that day. Then our young families will arrive and we will start the All Age Worship service at 10am. In this way we can all come together whilst still having the freedom to opt for the service (whether more traditional or contemporary) that we prefer!

So do take a look at page 28, where all the month's services are listed. Please note that our early morning services now start at the slightly later time of 8.30am. You will also see that on Sunday 20 November we will be having our next monthly 'café-styled' church. This was launched in October when nearly 50 people - from all generations - came together for coffee and cake, to socialise and chat and to hear a 'thought for the day'. It's very relaxed - there's no 'service' as such - and totally informal: do come along to our Sunday Café!



CALOR
Autogas

FREE COLLECTION
COURTESY CARS

NEW FARM MOTOR SERVICES LTD

New Farm Road, Alresford SO24 9QE

01962 732338

M.O.T. Testing Centre
Class 7 Vans from 3000 to 3500 kg
Class 4 Cars and vans up to 3000 kg
All makes cars & vans serviced and repaired
Horseboxes, lorries and campers up to 7500 kg
serviced and prepared for plating tests



L.P.G.A. Approved
Autogas conversions
www.amsautogas.com

CERTIFICATED ENGINEERS
RECOVERY AVAILABLE

Mulberry Tree Services

Problem Trees?

Fully Qualified Certified Tree
Surgeon with 25 years experience

Fully Insured
Very Competitive Prices

- Removal of Dangerous Trees
- Pruning • Shaping • Thinning
- Stump Removal • Hedge Cutting
- Fencing Specialist

Tel: 01962 88 68 66

Mob: 07974 761183

www.mulberrytreeservices.co.uk



PRESTIGE CARS of ALRESFORD

Private Hire Available For Airports,
Cruise Terminals and Train Stations
Longer Journeys undertaken as well

01962 865602

07752 570787

www.prestigecarsalresford.co.uk
kevin.mitchell202@btinternet.com

Garden Maintenance

Paul Moffatt

Mob: 07860 107175

Lawn Treatments
Mowing / Strimming
Moss / Weeds
Scarifying / Aerating
Chafer Bugs
Fertilising

Hedge Cutting
Light Chainsaw work
Garden Shed Maintenance
Patio Cleaning

One-off or repeat work
Weekly, fortnightly, monthly
Fully insured



D. Barker & Son
TRADITIONAL FAMILY JEWELLERS

Antique Jewellery a Speciality

Contemporary Jewellery
Silver & Watches

Full Repair and Restoration Service
to Jewellery, Watches and Clocks
Hand & Heraldic Engraving
Valuations Undertaken

40a West Street, Alresford
Tel: 01962 732200
www.dbarkerandson.co.uk

And finally, on a different note, November is a season of remembrance, and you will see on page 7 that we are laying on a special Service of Prayer and Reflection for those recently bereaved. If you would value a time of quiet to remember loved ones, we pray you will find this a 'safe space' where you can find comfort and strength for the future. In all these various ways, we hope you will sense that the Valley's church community is a place of warmth and welcome, playing a part in helping us all to get through the coming winter in good heart.

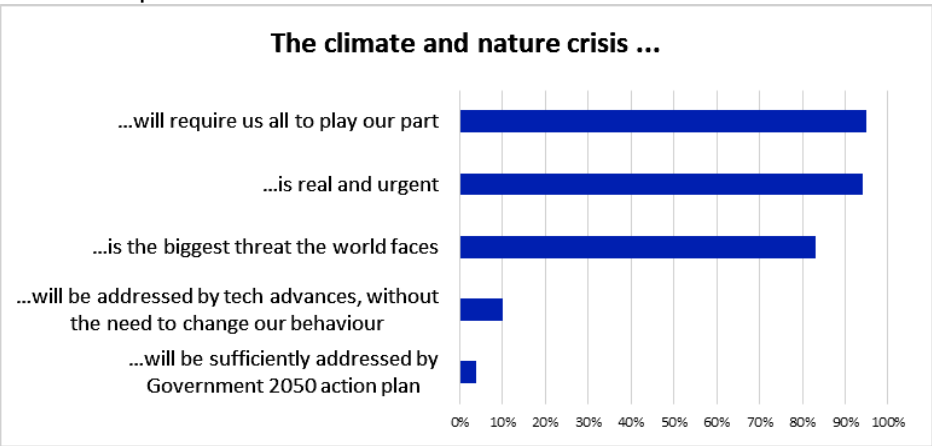
Revd Peter Walker - Rector

Environment Survey - The Results

Over the last few weeks the Parish Council has been running an Environmental Survey. The purpose of the survey was to understand what people in the Itchen Valley thought about the climate crisis and what steps they were taking to address the challenges. We're grateful to everybody who took the trouble to respond. We received around a hundred responses. This was fewer

than we were hoping for and we are aware that those who responded included many of those most keenly aware of environmental concerns. Consequently, we need to take care not to over-inflate the reliability and accuracy of our data. However, we believe that the results do help us understand the direction of travel in terms of residents' thoughts and actions and give us some idea of where, as a community, we might focus our efforts.

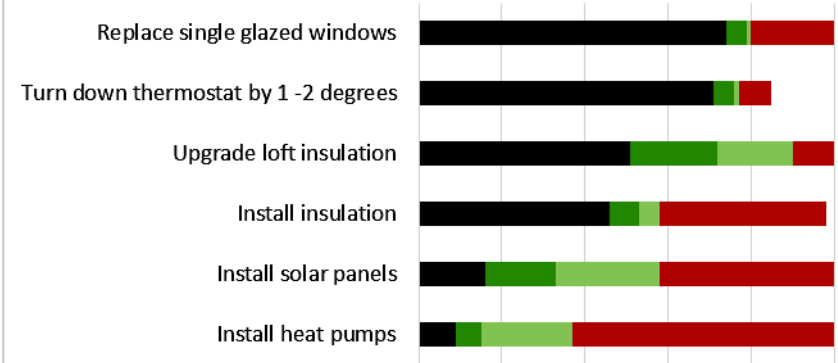
The results of the survey suggest strongly that the residents of the Itchen Valley take the climate and nature crisis extremely seriously. And they believe that although technological advances and government programmes are important, the role that individuals have in responding to the challenges is also vitally important. So, the question is what are we as individual households doing or are planning to do to contribute to the health of the planet? The next section of the survey attempted to answer this. Respondents were asked whether they had already implemented, say, loft insulation, or whether they had plans (*likely to adopt or may consider*) to do so **in the next 24 months**.



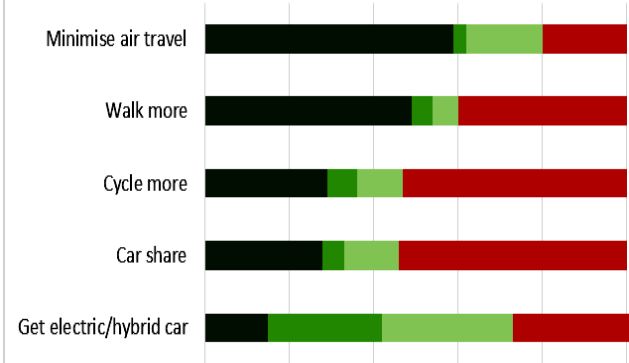
In the charts below the bars go no higher than 100% and the key is:

■ Yes , done % ■ Likely to adopt % ■ May consider % ■ Unlikely to adopt %

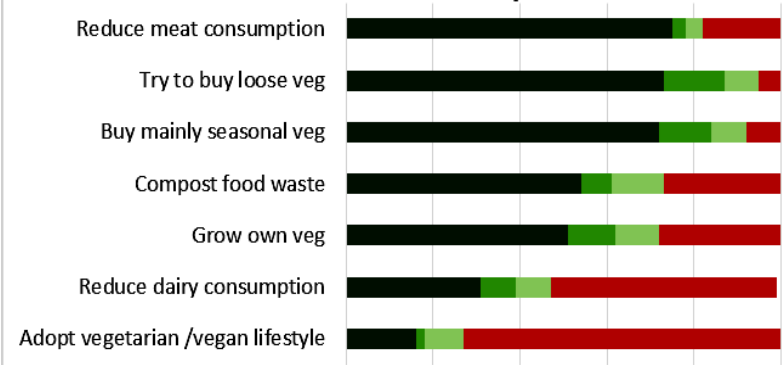
Home Energy



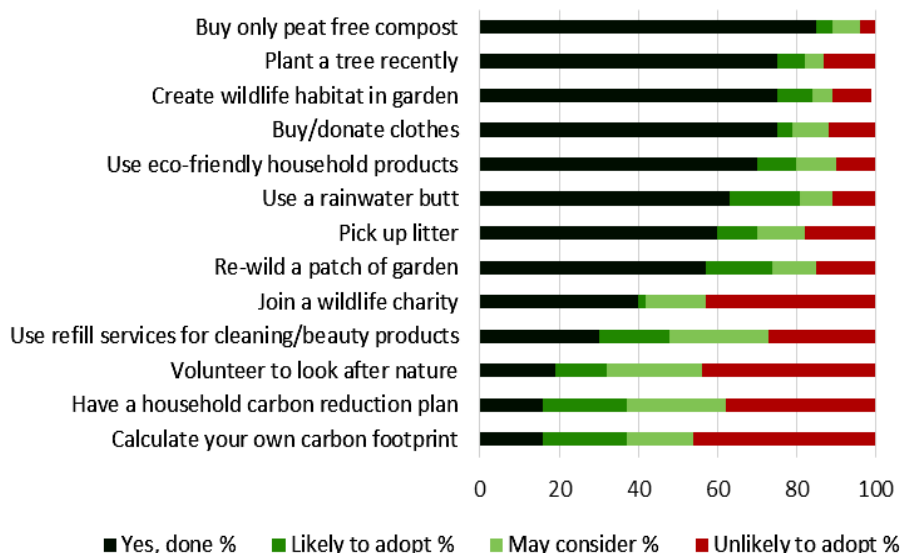
Travel



Food consumption



Other actions taken and planned



Where we are doing well

In the Itchen Valley we have a good appreciation of the need to change the way we live in order to combat climate change. In areas such as minimising energy to run our homes we appear to be doing well with, for example, relatively high levels of insulation.

We are a community that appreciates the value of walking and cycling but the lack of public transport limits our ability to abandon our cars. We probably have a higher level of electric car ownership than the country overall. And whilst few of us fully embrace either vegetarianism or veganism, it seems that we are reducing our consumption of meat and dairy. Not surprisingly for a semi-rural community, our interest in the natural world and looking after it seems to be high.

Where we can improve

An area where we might make a significant positive change is in installing

solar panels, with over half our respondents having installed them already or thinking about doing so over the next couple of years. We see similar enthusiasm in relation to electric cars, with only around a third of residents ruling out buying one in the medium term. No doubt the economics of both solar generation and electric cars are continuing to become more favourable as time passes.

On the face of it, it seems that a high percentage of respondents claimed that they were “minimising air travel”, though maybe we should have asked a more specific question about number of flights a year, as this is perhaps one of the major contributors to carbon emissions.

One critical stage in any change process is to produce a plan. So, it is concerning that so few people have drawn up any sort of plan to reduce their carbon emissions. The Parish

Council posted a Carbon Reduction Plan form to every household in the Valley at the end of last year. We continue to commend this approach as a means of focussing minds on the challenges and suggest a good time to do this might be the turn of the year.
Steve Percy, Itchen Valley Parish Council Environmental Working Group

Jackie's County Corner

I hope this Autumn finds you well, and maybe even as active as these runners



at the Rotary Clarendon Marathon! It was fun to be just one of the hundreds of volunteers supporting nearly 1,000 runners taking part. There are lots of opportunities to volunteer in your community, including being a School Governor. If you are interested, please contact me.

This month we had a stark warning from the County about the state of the finances at HCC, given to us in preparation for the Council tax budget in December. They expect a £200m per annum deficit by 2025/26, even having made £640m per annum savings since 2008. The budget for 2022/23 is £2.4 billion.

Inflation isn't just a problem for us at home: the social care of adults and children is increasingly expensive and the costs of building new projects and maintaining older ones are rapidly

increasing, in many cases by up to 40%. When I first became a County Councillor, approximately one third of the County's income had to be generated locally, the remainder came from Government. Now the position is more than reversed and after a period of nil and lower council tax increase limits, and a restriction on the social care levy, the potential income has been forcibly reduced.

There is a new trend to ask councils to bid against each other for a limited pot, which results in extensive consultations, and maybe no outcome. Unfortunately, Hampshire's bid for 'Bus Back better' was unsuccessful so there is no budget to transform buses as hoped. Capital programmes must be limited to those which maintain safe environments. This does not give us much hope on starting new capital programmes, but I am pleased that certain capital programmes outlined last month are expected to be going ahead. You can read more at <https://www.hants.gov.uk/News/12072022toughestbudget>

Road maintenance

Drainage: I have reported several drainage issues in the division; the gully cleanser is travelling round at present so if you have drains that need clearing, please report on www.hants.gov.uk/transport/roadmaintenance. You can see local road works that might affect you one day, one week or longer on www.one.network

Hampshire Hospitals Foundation Trust (HHFT): Hospital rebuild

I am the only member on the County's Joint Health Overview and Scrutiny Committee (JHOSC) who actually lives in the catchment of the HHFT hospitals! This Joint Scrutiny Committee (with Southampton) is looking at the redevelopment of the

hospital complex. On the last day of September, we heard that new hospital plans cannot be finalised until the Treasury agree the budgets for the 40 new hospitals. Only then can they consult on the site and services there. About 17% of the inpatients are remaining in hospital because there is nowhere to send them, created by the difficult backlog of finding social care. Meanwhile HHFT runs 'virtual wards' which support the 9 in 10 of patients who go in for elective operations, and go home on the same day!

After delays outside HHFT's control, it is now expected the site will be up and running by late 2030.

M3 Junction 9

The consultation of the new design for this junction is currently underway before National Highways seek a Development Consent Order over the winter. Go to national highways and search 'M3 Junction 9'. The A33 option in the new design is much better, but local residents are expressing concern about the longer walk/cycle path alongside the A34. This design will add to the UK's carbon budget, but should reduce queues on south and north in busy periods.

I want to see a Construction Management Plan which would reassure me and other councillors of the free running of local roads during the three years of construction: I await this before giving tacit approval to the scheme. Construction completion is now due in late 2027.

The County Corner for October is published on my website www.jackieporter.co.uk.

You can contact me by email: Jackie.porter@hants.gov.uk or phone 07973 696 085

See also page 23 for more on M3 Junction 9 - Ed

Our Wild Valley: Autumn celebrations for all.

Leaves come in all shapes, sizes, textures and colour. To make the most of these in October, we have enjoyed making leafy autumn bunting, at my Montessori Mini Nature Connect Group, at Garden Club at Itchen Abbas Primary school and at my Forest School mornings for pre-schoolers. Participants choose whatever leaf they like, and soon work out which ones are better for making two small holes in - two to four year olds at Montessori were doing this very well using a small stick. We then threaded them on. Really simple and light.



At school Garden Club the children could both make the holes and then thread - more patience needed, a bit more acceptance that not every leaf would work well, but lovely team work in getting them all on and together. They were hung up them up across the school window so Mrs Smith and others could enjoy.

If feeling artistic one could add in many a glamorous berry, old man's beard and other seed heads (possibly a needle and thread could work well here) and show off some of the autumn delights in your

garden or front door.

And if you have a pre-schooler please do email me for more info on our Forest School mornings every Friday near Alresford, in term time.: millersj24@yahoo.co.uk.
Sophie Rogers.

Easton WI and the Cricketers Quiz Night

In September after the long summer break, members joined the fortnightly Quiz at The Cricketers. A Toast in tribute to the Queen and to King Charles III was given - a very poignant moment. We attempted to give the right answers to the questions and enjoyed a delicious supper during half-time.

In October, we welcomed knitting historian Joyce Meader who arrived carrying a very large bag full of knitted garments, together with her collection of knitting patterns which she uses to recreate knitted garments for TV and film

companies who need authentic period clothes. She gave a very entertaining and amusing talk.

Our meetings

are held at 7.15pm on the second Thursday of each month in Easton Village Hall and we welcome visitors. In November Summerdown Farm will be visiting us with all things minty.

Sallie Peake



From The Parish Council.

Things are beginning to happen.

Highways England have put forward their final proposals for the **M3/Junction 9 project**. Hopefully as many Valley residents as possible were able to see the plans at the drop-in consultation recently held in the Tesco car park. They also came and gave a presentation at the start of our Full Council Meeting. Thank you to the residents who took an interest and joined us at the meeting. We were able to ask a number of searching questions. Overall many of our concerns have been remedied and there have been a number of welcome improvements over the original scheme. There will be: access to and from the Winnall roundabout for A33 traffic without having to join or cross the fast moving traffic on the A34; direct access to the northbound M3 without having to go up to Winnall; a combined off road route to Winnall from the Valley for walkers, cyclists and those on horseback; and the amount of spoil to be disposed of locally has been significantly reduced. The question was asked by one of those attending why anyone should wish to go to Tesco on a horse to which the chairman replied that it was unlikely but they might wish to go to Mole Valley to get the horse his feed! The real point however is that the path will link in with other bridleways. Ask the leader of our Rights of Way Group for the details.

Another bit of progress is the renovation of the Itchen Abbas bus shelter (see front cover – Ed). As already reported it has been taken away to a barn where the old rotten shingles have been stripped from the roof, rotten cladding removed from the sides and the main structure repaired. New

cladding has been put on the sides, re-roofing with new shingles is about to begin, and a side window installed to allow those in the shelter to see the bus approach. The shelter will then be taken back and secured in place. If thought necessary the floor will have a new surface as well. Thanks to Christopher, John and Tony for all the time and hard work they have put into this project and a very big thanks to Dick Burge for providing a barn where the work could be carried out under cover.



It is not known for how much longer the County Council will fund the Lengthsman Scheme. Although it significantly helps to keep a number of our paths open it does not cover all the work required. Most years the Parish Council has provided extra funding for this work. As may be recalled, recently a number of volunteers from the Valley and the Ramblers Association have worked on improving and maintaining some of our



footpaths. The opportunity arose to purchase, at a very reasonable price, a second hand brush cutting ride on mower.

With support of volunteers it should help to keep as many as possible of our paths and bridleways clear at a reasonable cost. A good start has been made using the mower to clear the footpath on the south side of the vineyard.

Thank you to all those who completed the survey sent out by our Environmental Working Group (see report of the results on pages 18-20). At the AGM of the Winchester Association of District Councils, where the issues of climate change and the environment were on the agenda, it was pleasing to know that Itchen Valley were ahead of many, although not necessarily in the lead, on every aspect. After the success of tree planting let's see what else we can do. Every little helps.

Patrick Appleby.

Worthy Earth Music Festival

Worthy Earth, the organic vegetable cooperative set up by three friends in 2020 in Martyr Worthy, held its first

music festival in Dummer late in September. We took along our teenaged kids and some friends.

Having bought a family day ticket bundle for the Saturday (the festival was held over 3 days) costing £120, we didn't know quite what to expect when we made our way to Dummer Down Farm late that morning.

It turned out the festival was a sell-out so we were glad to have pounced on the tickets early-doors. The Autumn sun was just burning off the dew which lay over the fields, copses and hedgerows when we arrived to find many of the festival goers who had camped still rousing themselves with a coffee after the opening Friday night. The atmosphere was relaxed and the festival itself very small in scale, with the main music venue, food, activities and stalls in one large field with a separate 'secret tent' for late night dancing to a DJ on adjacent land.

Bands played intermittently throughout the day in a circus-like tent which provided a cosy, intimate venue where people could come and go, sit or stand, as they pleased. A charismatic yet idiosyncratic compere introduced the acts who played and sung an eclectic mix of folk and world music, which we found rich and life-affirming. Two notable acts on the Saturday were 'Hampshire and Foat', whose music has accurately been described



by people more in-the-know than I as a mix of "pastoral folk, cosmic jazz, and classical composition", and 'Baka Beyond', a lively and experienced

Afro-Celtic dance band with a serious following. A couple we met who'd travelled to the event just to see 'Baka Beyond' "couldn't believe they'd play at a little festival like this."

In between the music there were activities such as yoga, circus skills, and a real highlight for us was a foraging walk with Jack from 'Forage for Knowledge'. Over an hour and a half, a small group of us rambled and dawdled along the edges of the farm, not really getting all that far because at every step of the way Jack would point out and elucidate with huge knowledge, passion and eloquence on the uses of different wild plants and flowers: from the tiny 'pineapple plant' which one sees growing almost universally on the edges of our fields and which smells exactly like pineapple, to plantain leaves



Photo Aïcha Marie

which are the true salve for a stinging nettle bite (unlike dock leaves which, we learned, are simply a placebo), to hawthorne berries which have an avocado texture and are very rich in vitamin C, and rose hips which pack their greatest vitamin punch after the first frost. We came away from this very inspired and would encourage anyone interested in foraging to

**Daren George -
your local pest
controller from
Alresford**



- Wasps • Rats • Squirrels
- Moles • Rabbits • Insects • Mice

Fully insured - Discreet service assured

Tel: 07778 141505

traditionalpestcontrol@gmail.com

www.traditionalpestcontrol.co.uk

Checktrade.com

Where reputation matters

PETER BRAY

DOMESTIC APPLIANCE ENGINEER

Repairs to Washing Machines, Dryers,
Electric Cookers, and Waste Disposal
Units

Service Agents for In-Sink-Erator,
Tweeny, Maxmatic, Waste King and
Waste Maid.

Tel 01962 714224

Mob 07885 490786

11 Hill Rise, Twyford,
Winchester SO21 1QH

Computer Problems?



- PC, Mac, iPads, Phones
- Systems & Software Setups
- Virus cleaning & Security
- Tune ups & Health Checks
- Broadband, WiFi & Network
- Upgrades & Hardware
- Data Recovery
- Cracked screens replaced

Independent and Impartial Advice
Home Visits (some evenings available)

*10% labour discount over 1/2 Hour with
Parish Magazine*



Laptops, Macs, Phones,
Data recovery

PC's, Laptops, Home
setups, Viruses

Colin: 01962 713890 Gerry: 01962 712674
Mob: 07727 481220 Mob: 07900 845814

Qualified engineer

Microsoft Certified

IVC

Cars Chosen With Care

Excellent prices on both new and
second hand cars.

For further details telephone
01962 733097 or visit us at www.ivcuk.com

Belmont House
The Dean
Alresford
Hampshire SO24 9BQ
Telephone: 01962 733097
www.ivcuk.com

Selling new and used cars in Hampshire and beyond since 1987

check out his website and YouTube channel: <https://forageforknowledge.com/>

On the food front there were several offerings including Worthy Earth's own produce and various vegan and vegetarian options, but our number one destination soon became a Tibetan kitchen whose curries were simply delicious. We're already looking forward to next year!

Nathalie Paterson

On the Cusp

Historians love to debate when historical events such as the Enlightenment or the British Empire actually started. You might imagine that the start of a specific decade like the 1960s would be beyond dispute. However, many have suggested that this epoch-changing period started much later than January 1960. A new book, *On the Cusp* by David Kynaston, argues that the 1960s really started on 5 October 1962. It was on this day that, sixty years ago last month, the Beatles released their first single *Love Me Do*. It had been test-recorded on 6 June when the inadequacies of their original drummer Pete Best had been exposed, resulting in his brutal dispatch and the recruitment of Ringo Starr for the recording session on 4 September. The record reached number 17 in the charts, propelled by large sales on Merseyside. I remember visiting McKenzies, our local record shop in Birkenhead after school on the day of its release to listen to it in a booth but not being able to afford the price of one shilling and six pence (8p in new

money). Both songs on the record, including the B side *PS I Love You*, were largely Paul McCartney's compositions but through an error in the EMI label printing department they were credited as Lennon-McCartney rather than the other way round as Brian Epstein had intended, a usage that became set in stone for all time.

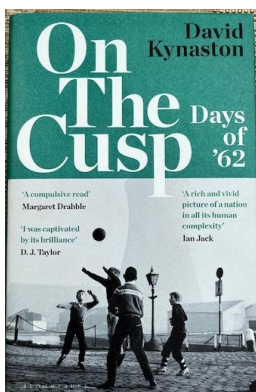
On exactly the same day in October, another era-defining popular culture icon was launched with the premiere of the first ever Bond film, *Dr No*, at the London Pavilion. And on the same evening, two people paid to hear another new band in the back room of

the Woodstock pub in North Cheam, whilst four people stood outside listening for free. A slightly less than promising start then for the Rolling Stones!

Many ground-breaking television programmes saw the light of day in 1962 including, *Steptoe & Son*, *Z Cars*, *University Challenge* and *That Was The Week That Was*. Other steps from the 1950s into modernity that year also saw the launch of

the first Sunday Times colour magazine, the start of the first (short-lived) hovercraft service from Wallasey to Rhyl and the first transatlantic communications satellite, Telstar. Then there was the consecration of Coventry Cathedral, the first appearance of the Austin 1100 and the Ford Cortina, the Proms debut of the 17 year old Jacqueline du Pre and the final cricket match in Scarborough between The Gentlemen and the Players. The 1960s were well and truly launched by October that year but, naturally, many others still argue about when they ended!

Steve Percy



Itchen Valley Churches

Sunday 6 November

8.30am - Holy Communion (said) - St John's, Itchen Abbas
coffee and teaching

10am - All Age Worship - St John's, Itchen Abbas

5pm - Service of Prayer and Reflection - St John's, Itchen Abbas
for those recently bereaved

Sunday 13 November - Remembrance Sunday

8.30am - Holy Communion (1662) - St Mary's, Avington

10am Acts of Remembrance - Easton and Avington War Memorials

10am - Act of Remembrance and short family service - Itchen Abbas

10.45am - Act of Remembrance at Martyr Worthy War Memorial
followed by Remembrance Service - St Swithun's, Martyr Worthy

Sunday 20 November

10am - Parish Communion - St Mary's, Easton

4pm - Café Church - St John's, Itchen Abbas

5pm - Choral Evensong with Bishop Peter Doyle (formerly of St Peter's
RC church, Winchester) - St Swithun's, Martyr Worthy

Sunday 27 November

8.30am - Holy Communion (1662) - St Swithun's, Martyr Worthy

10am - Valley Worship - St Mary's, Easton

Café Church

Following the success of our first Café Church last month, our next one will take place on Sunday 20 November at St John's Church, Itchen Abbas. **Everyone is welcome**, come and meet new friends and old. There will be activities for all ages or just an opportunity to come along and read the weekend papers with tea and cake!

Rector - Revd Peter Walker

revd.peter@itchenvalleychurches.org 01962 588313

LLM - Mr Gerry Stacey

gerry.stacey@biblesociety.org.uk 01962 620263

Parish Administrator - Beccy Clark

admin@itchenvalleychurches.org 01962 779845

www.itchenvalleychurches.org

Lawn Care

Feed, Weed & Moss
Control

200 Sq. Metres - £100

5 visits per yer

Tel. Brian 07710 792839

SHAUN BARNEY

Professional

Painter & Decorator

Local Tradesman with

20 years experience

Quality Work

Competitive Rates

Fully Insured

01962 864033

07928 027618

A H SERVICES

**Central Heating
Plumbing & property
maintenance.**



Gas Safe registered Engineers
NVQ qualified & certificated plumbers
All aspects of plumbing & heating
Installations/Service/Repairs
Electrical/Property maintenance.
Emergency call outs. Landlord
management.

Bathroom & kitchen refurbishment/
Power flushing, hot water cylinders, gas
fires, cookers, drains, water softeners,
tilling, lead work.

Tel: 07533 776 406 or 07847 144 092

Dave Giles of Giles Tiles

Floor and wall tiling

Kitchen & bathroom refits

Friendly service & free quotes

dave@gilestiles.co.uk

07513 941962 01962 854184

WE HAVE MOVED to a
fabulous showroom in
Northington, near Alresford.
Our exciting collection of
new skiwear and cold
weather accessories is ideal
for the mountains as well as
active pursuits closer to
home. We cater for adults
and children of all ages.

To book an appointment to
see our extensive range of
stylish performance kit,
please email us in advance.



skiwear@polarexchange.co.uk | 07783 538389 | 07767 238874

www.polarexchange.co.uk

The Valley Quiz No. 8

1. By what name is the city of Venta Belgarum now known?
2. What animal has the longest life span?
3. The world's most remote post office is at Port Lockroy. Where is Port Lockroy?
4. What is the game called that uses a "squidger" to shoot a "wink" and "squopping" to stop it?
5. What do the Po, Brenta, Bojana, Krka and Tagliamento have in common?
6. Who painted "The Light of the World"?
7. Where will you find the Spirit of Ecstasy?
8. What was the second child of Queen Victoria called? And what did he or she do in life?
9. What was the name of the station with a bare platform that Edward Thomas stopped at in a train on a hot June day in 1914, and heard birds singing?
10. Who holds the record for the longest reigning Monarch?

The Practical Gardener

Of all the activities in my life, I find gardening is the least stressful. After all, for most of us, it's a case of trial and error and if something doesn't work, so what. I'm planning an O gauge garden railway as I have no room in the house. This has a direct impact on all storage areas outside and it's amazing how much clutter we can accumulate.

One of my neighbours is building quite a large extension. It's interesting that all the agreements made by

WCC can be broken when it comes to planning. So I have resorted to my trusty Umbrella Bamboo *Fargesia murielae* 'Jumbo' which I am told will grow to 4m and not be intrusive. We shall see. On a general issue, we all have a duty of care to our neighbours with fences, plants and trees. So my neighbour's large plum tree needs a prune but definitely not now, it's a summer job.

My biggest challenge is lawn levelling. I can see that my earlier efforts were inadequate and I shall need tons of material to do the job properly. I'm trying a mix of sand and soil, well sieved and levelled with a long strong plank. Definitely a task for two people. Happily all the new turf I laid earlier has done well, rather better than other parts of the lawn.

I have two boundaries with some quite old shrubs which have not been well cared for. Cutting back has produced some rather bare and ugly branches. It's probably now best to cut them out completely and replant. This is a good time for such activity as the soil is still warm but not too wet.



I am amazed at the poor quality of some on-line suppliers of plants. Some of the most popular names in my view are just rubbish! All the shrubs supplied by Becketts or Hilliers are doing well compared to those from an on-line



Easton Players
PRESENT

Cinderella

A FAMILY PANTOMINE



Easton
Village Hall
14th, 15th, 16th
December
7.30pm
Sat 17th Dec
2pm & 6pm



TICKETS:
£10 Adults / £5 12s and under
BOX OFFICE:
eastontickets123@gmail.com
Mary & David Purser 779328



nursery, many of which have died. Try insisting on a guarantee promised on the web-page! So I urge caution and recommend whenever possible to support our local garden

centres.

I have been sowing in past weeks and happy to report lots of new seedlings, especially perennials.



They will do well in the greenhouse over winter. Now is the time to think about frost protection and I will be using bubble-wrap very soon. It takes time but is the right thing to do to save energy. My lovely garage wall is proving to be a boon.

I can also report on the battery mower – just superb, lighter to use, quiet and great at collecting the grass. Probably not suitable for really large lawns but every year technology moves on.

Happy Gardening
Tony Gaster.

Roast Beetroot Soup

4 medium beetroot
4 medium carrots
6 tomatoes
1 large onion
2 cloves garlic
2 tablespoons rapeseed or other vegetable oil

1 litre beef stock (made with a cube)



Scrub the beetroot and remove the leaves. Scrub the carrots and cut into chunks; halve the tomatoes. Skin the onion and cut into quarters.

Line a good sized roasting tin with tin foil (it makes it much easier to wash up). Cut the beetroot into large chunks, coat with the oil and season well. Put into a hot oven (180) and roast for 30 minutes. Remove from the oven, add the carrots, tomatoes, onion and the garlic cloves (still in their skins). Toss all the vegetables together with some more salt, and roast for a further 30 minutes or until they are soft. When cool enough, slip the garlic out of their skins, and tip all the vegetables into a large saucepan. Add the stock, bring to a boil and simmer gently for 5 minutes. Use a stick liquidiser to make a smooth soup (you can sieve it if you want it perfection) and adjust the seasoning. Serve garnished with a swirl of yoghurt or crème fraiche, or a crumble of feta cheese and chopped fresh coriander

Sue Sheph

Or avoid single use tin foil and dissolve the delicious caramelised bits in the roasting tin with the boiling water you will use for the stock - Ed



ONE TO ONE SUPPORT FOR APPLE MACS & WINDOWS

Helping you to make the most of your Mac computers, Windows laptops, PCs, Wi-Fi, Email and home tech. Computer support and training, home set up and advice where to buy.

**Macs, iPhone, iPad and iCloud
and Windows Laptops**

07392 552 592

www.mistermac.co.uk

andy@mistermac.co.uk

worthy PEST CONTROL



Worthy Pest Control are your local pest control experts based in Kings Worthy. We can assist with all your pest control needs.



- Rats • Mice
- Wasps • Hornets
- Cluster Flies
- Fleas • Moths
- Moles • Squirrels
- Birds



Fast, professional, pest control service to keep you, your home and your business safe from pests.



Please call Dave on

01962 435000
or 07989 582117

10 Fraser Road, Kings Worthy, Winchester SO23 7PR
david@worthypestcontrol.co.uk

RICHARD — FST STEEL 1860 — & PARTNERS

THE FAMILY OWNED FUNERAL DIRECTORS



The Steel family have proudly served the communities of Winchester, Alresford and the Itchen Valley since 1860.



OFFICES IN WINCHESTER, ALRESFORD & BISHOP'S WALTHAM

www.steelsfunerals.co.uk | 01962 862333 | 24 hours

Two of Winchester and Alresford's best known estate agents are delighted to have agreed sales on more than 60 properties over the past year. Providing a service like no other, Nony & Sam will take all of the stress of both buying **and** selling, and have been recognised by national bodies for their customer centricity.



RaterAgent - Individual Agent of the Year 2016 (2nd)
Times And Sunday Times - Negotiator of the Year 2016

If you are ready for totally different experience to the high street agencies, with a bespoke service from start to finish, give Nony & Sam a call!

NONY KERR-SMILEY
+44 (0)7712 648740
nony@nonykerr-smiley.com

SAM KERR-SMILEY
+44 (0)7801 056784
sam@nonykerr-smiley.com



Selling Property with Honesty & Integrity for over 20 Years

If you are currently under a sole agency contract to another agent, you should check the terms of that contract to avoid potentially being exposed to dual fees

Itchen Valley cinema!

Midnight in Paris, a 2011 Woody Allen film, was the attraction on Saturday 15 October at St John's Church in Itchen Abbas. It proved to be an entertaining afternoon, enlivened by a quiz to test how much of the unusual plot the audience could recall.



Considered a romcom, the film features an American engaged couple and the bride-to-be's parents as the leads. The fiancé, a would-be novelist played by Owen Wilson, wanders out in the streets of Paris late in the evening only to find himself in the Roaring Twenties, a 90-year time shift into the past. Entering a bar, he encounters Scott and Zelda Fitzgerald with Ernest Hemingway, and the next night he takes the opportunity to have his draft novel reviewed by Gertrude Stein. Later on, he is puzzled when the site of the bar is occupied by a laundrette as he finds himself back in his own era! Belief is suspended by the audience as more and more painters

and writers of the 1920s, and later even from the Belle Époque, are brought back to life; no attempt is made to rationalise the extraordinary time shifts.

Tea and cakes were provided at the end of the film, and Gerry Stacey won the quiz prize. Altogether a most enjoyable afternoon, which we hope will be the first of many such events.

Thanks are due to Tim Clapp and John Bouldin for organising the excellent film projection and to John also for devising the quiz, and to Sarah Hunt for co-ordinating the refreshments.

Peter McManus

Bird of the Month - the Stonechat

There is a family group of these birds around the river and in the field between the Martyr Worthy bridge and Easton. They can be seen perching on the fencing which is a typical behaviour. This is a female, the male is a smart little bird with a blackish head and distinctive white patch on the throat. Their call sounds like two stones being hit together - hence the name.

Elaine (words) and Henry (pic) Labram



Worthy Heating & Plumbing Services Ltd

- Free Boiler Estimates
- Power Flushing
- Landlord Gas Safety Checks
- Gas / Oil / LPG
- Boiler Servicing / Installations / Repairs
- Hot Water Cylinders
- Central Heating Systems
- Plumbing work undertaken
- Forth Generation Family Business

Tel: 01962 776321

enquiries@worthyheatingservices.co.uk



nosh catering

Sensibly priced, bespoke catering using local produce.

For all enquiries contact Jude Ower:

Mobile: 07729 473795

Home: 01420 568179

www.noshcafebar.com

noshcafebar@gmail.com

nosh café | bar

Lymington Bottom Road
Next to Reads Butchers

Open 8-5 Mon/Sat
ALSO AVAILABLE FOR PRIVATE HIRE

Itchen Valley Montessori



Itchen Abbas

9.00 am - 2.45 pm
Monday

9.00 am - 1.00 pm
Tuesday to Friday

The Montessori Method in a
prepared classroom

Activities include Art & Craft,
Music & Movement, Cooking,
French and Drama

Call 01730 829377

manager@itchenvalleymontessori.co.uk

ANDREW SMITH & SON

1793

FINE ART AUCTIONEERS & VALUERS

Hampshire's Leading International Fine Art & Antiques Auctioneers

- monthly antiques & interiors sales
 - six weekly fine art, antiques & collectables auctions
 - achieving World record prices
 - global exposure via 'live' internet bidding
 - regular contributors to BBC's 'Flog It!' and 'The Antiques Road Trip'
- Contact us for details of our;
- complete property & contents valuation services for
Sale -- Insurance - Probate - Family division
 - free valuation advice for auction sale
 - complete house clearance
- www.andrewsmithandson.com



THE AUCTION ROOMS, MANOR FARM, ITCHEN STOKE,
WINCHESTER SO24 0QT

Tel: 01962 735988 email: auctions@andrewsmithandson.com

Itchen Abbas Vendange 2022



Are there some things you'd like to do just for a day or as a one-off? Steer an ocean-going yacht in a stiff breeze, cook a meal with a Michelin star chef or drive a Ferrari round a race-track? In films and on holiday I've enjoyed watching people picking grapes in sun-drenched vineyards in France, California and Italy. And in the movies at the end of the labour in the vineyard the grape pickers sit round, sharing a



meal. What fun to experience it for a day – but a bit expensive taking a trip to France or California!

Years ago it never occurred to me that I'd be able to look out of my garden and see a vineyard planted in Itchen Abbas, enjoy drinking fine wine from “just over there” and even better, help in the wine harvest.

My experience of wine-picking came true this month in Balbina's vineyard – Bsixtwelve – “a small artisan vineyard set in the Itchen Valley”. Around 30 of us met on a sunny morning, collected our secateurs and gloves and picked the most luscious Pinot Blanc grapes. We're British so we picked in sun and rain. A superb harvest with the promise of an excellent wine to come. And we played our part.

Just like the movies, Balbina and David, the owners of the vineyard provided us pickers with a wonderful packed lunch and the sun did shine on us. As a small vineyard they have sold out of their delicious wine from previous years so instead we toasted the 2022 vintage with fizz from the Grange and Raimés. C'est la vie!

John Bouldin

Tiddler Joke

Q What did the ocean say to the sea?

A Nothing, they just wave (*Editor*)

Memorials
Building Stonework Restoration
BLACKWELL & MOODY Ltd
Stone Masons for five generations
Magdalen Masonry Works
Alresford Road Winchester SO21 1HE
Tel 01962 852476
blackwellandmoody@gmail.com



Can't get the hang of
your computer?

One-to-one tuition by
qualified trainer - DBS checked
COVID safe sessions or remote available
Call Christine for details on
01962 735359

hair by **Louise**
MOBILE HAIRDRESSER
Previous experience in top
West End and Winchester salons
01264 712037 07788 248378

Alresford Motor Services

New Farm Road
All makes serviced and repaired
MOT test station
Volkswagen, Audi, Saab
and Volvo specialist
01962 733 888



Ocean Bespoke Garden Rooms
01962 779690
davidpike1@btconnect.com

THE CRICKETERS INN EASTON



We are now cooking Barrel and
Stone Artisan Pizza baked in house
with the option of takeaway or
delivery dependent where you are.

New winter menu out soon too.

We have two immaculate letting
rooms available for hire.

Quiz night is fortnightly with prizes for the winning team
See our Facebook page for details of our special events!

Telephone 01962 791044

Flower of the Month

The Killarney Strawberry
ative to Kerry and Cork, is a flowering
shrub now flourishing in the Itchen
Valley despite our winter frosts.
Frosts can be harsher here than on
the Irish coast, but the climate is
changing. Flowers (white) and fruits
(red) appear in the same month.
There's lots of autumn nectar here at
an important time for the bees.

Dorothy and Simon Broadley



Pub Spy

It was a shame when the
Tichborne Arms closed
during lockdown, after
Patrick the landlord sadly
died. It was a lovely old
fashioned pub, with dogs
and tables crammed into the bar and
the loo out the back. I don't
remember ever seeing the garden. So
Food Spy has been very interested to
follow the progress of the pub's re-
opening, which began last year under
the watchful eye of Joel Czopor and
Susie Clarke. Susie and Joel moved
locally, having successfully run pubs in
London, when they decided they
would prefer to raise a family in the
countryside. As a consequence, they
have been getting the pub up and



running whilst also managing their
young son and brand new baby
daughter.

After finding the Tichborne Arms and
planning a sensitive refurbishment in
the winter of 2021, it took them 24
weeks to get the required planning
permissions. The summer was fading
before they were able to open,
cautiously at first so that the new
team would not be overwhelmed.

Pub Spy and friends had a wonderful
walk from Cheriton, and stopped by
at the pub for a late coffee - but then
the garden was so enticing and the
welcome so charming that the beer
beckoned, and before we knew it we
had decided that it was lunchtime.

We sat in the beautifully landscaped
garden and ate excellent fish and
sharing plates from the daily specials
board, served by Joel's dad who had
been drafted in to help. The courtyard
behind the main building has been
incorporated into a new restaurant
space and kitchen, and the garden we
had never noticed before is now a
series of interconnecting spaces
opening into a lovely view of the open
countryside beyond. In fact the
potting shed looked so enticing that
we were back a few weeks later to
pick blackberries in the lane by the
church and return to the pub for an
enormous full English breakfast.

Pub Spy has every expectation that
the new Tichborne Arms is going to
be a top local venue, and wishes the
new team every success. It just might
be time to try the Sunday roast

STOP PRESS

We congratulate The Plough in Itchen
Abbas on its Tripadvisor Travellers
Choice award - voted for by real
people, not restaurant critics. Top
10% of restaurants worldwide!

VILLAGE HALL INFORMATION

Easton Village Hall
www.eastonvillagehall.co.uk
07308 863972 or
evh.booking@googlemail.com

Martyr Worthy Village Hall
Lucinda Ffennell 779701 or
martyrworthyvillagehall@gmail.com

Itchen Abbas and Avington Village Hall
www.iaavillagehall.co.uk
Hall Manager: Izabela Young
manager@iaavillagehall.co.uk
07947 191229
Village hall callbox 01962 791021

November CAMEO Tuesday 15

1. Winchester
2. The Greenland Shark. It is
assessed to live for between 300 and
500 years.
3. Goudier Island in the Antarctic
Peninsular. (It opens for 5 months
each year.)
4. Tiddly Winks
5. They are all rivers that flow into
the Adriatic.
6. William Holman Hunt (1827–
1910)
7. On the bonnet of a Rolls Royce
car.
8. Prince Alfred, later Duke of
Edinburgh. He joined the Royal Navy
and became a successful naval officer.
9. Adlestrop. (In Gloucestershire).
10. Louis XIV of France. (1643–1715).
He was aged 5 when he inherited the
throne.

Quiz Answers

Local monthly information

Itchen Valley area waste

Collections:

Black and brown garden bins on 4
and 18 Nov

Green bins on 11 and 25 Nov

Glass boxes on Friday 11 Nov

Hampshire Farmers' Market in Winchester

Sundays 6 and 27 Nov 9 am—2 pm

Parish Council Meetings:

3 November at 7 pm (Itchen Abbas
and Avington Village Hall)

Bus information

67 Bus operated by Stagecoach.

To Winchester:

Monday and Thursday

(Sch) 8:20 9:23 13:53 16:23 17:23

(NSch) 8:23 15:23;

Tuesday, Wednesday and Friday

(Sch) 8:20 09:23 11:53 13:53 16:23
17:23

(NSch) 8:23 9:23 11:53 13:23 15:23
17:23

Saturday 08:23 11:23 14:23 17:23

To Alresford:

Monday and Thursday

(Coll) 11:49 15:19 17:11 18:09

(NColl) 11:49 15:19 17:09 18:09

Tuesday, Wednesday and Friday

(Coll) 09:49 11:49 13:19 15:19 17:11 18:09

(NColl) 09:49 11:49 13:19 15:19 17:09
18:09

Saturday: 09:19 12:19 15:19 18:09

Key: Sch School days only; NSch School
holidays only; Coll College days only;

NColl College holidays only

No Sunday or bank holiday service.

All times shown are at Itchen Abbas. Times
are 5 minutes later (or earlier) at Easton.



A SPLASH OF COLOUR
DECORATION

*painting & decoration
walls & ceilings
kitchen cabinets
interior & garage doors*

CONTACT GRANT:
07423 837193 | splashdecorator@gmail.com



Tom Fisher
Tree Care

Fully qualified and insured specialists in tree care, hedge trimming, stump grinding and garden reclamation

01794 389214 / 07725 835715
www.fishertreecare.co.uk

STORAGE made easy

- **24/7 access**
- **Sizes to suit your needs**
- **Short or long term**
- **Easy to find, easy to use**
- **On your doorstep**

01962 771993
www.barn-store.co.uk



Holden Farm Cheriton SO24 ONX



Weekly Yoga Classes • Martyr Worthy • £8
 - You-Time Yin Yoga on Sundays 19:00-20:00
 - Fluid Flow Yoga on Mondays 17:30-18:30

Moon Yoga Workshops • Wickham • £25

Yoga Retreat Days • Easton • £70
 including yoga, lunch and nature walk

Sacred Yoga Retreat Weekends
 New Forest • £320-£610



www.sherinshe.com/yoga
sherinshefik@gmail.com • 07976606696

BESPOKE CURTAINS,
 BLINDS & CUSHIONS
 INDEPENDENT BRITISH
 DESIGNER FABRICS
 TRACKS & POLES

COUDRE

INTERIOR FURNISHINGS
 WORKROOM

3B SCYLLA IND. ESTATE
 WINCHESTER SO23 0LD

BY APPOINTMENT ONLY

07411 711 168

www.coudre.co.uk

Maid Marian

PROFESSIONAL DOMESTIC SERVICES



High quality domestic services Guaranteed



One less thing to think about.

We can help.

- Regular cleaning and end of tenancy cleaning
- One off spring cleans
- Washing and Ironing
- Carpet cleaning
- Building maintenance including painting and decorating
- Shopping
- Man with a van

telephone: 01962 736713
 email: enquiries@maidmariancleaners.co.uk
 web: www.maidmariancleaners.co.uk



Jemma Giles

your local

Advanced Clinical Massage Therapist.

Treating clients who suffer from:-

***Back and neck issues * Headaches**

***Frozen shoulder *Tight muscles**

***Low energy *Tennis elbow**

Call Jemma to arrange your treatment on

07752 623234 or 01962 854184

jemma@massagetherapywinchester.co.uk

www.massagetherapywinchester.co.uk

Mansard House, Easton, Winchester, SO21 1DQ

Showroom

Workshop

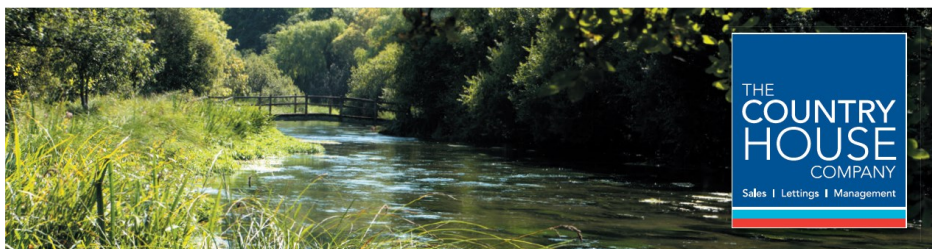
GARDEN
GEORGE CANN
MACHINERY

TEL 01962 771800

TEL 01962 771800

LACEYS FARM, BRAMDEAN, ALRESFORD SO24 0JT

www.georgecanngardenmachinery.co.uk



THE
COUNTRY
HOUSE
COMPANY
Sales | Lettings | Management

Selling, Letting & Managing properties in the Itchen Valley

02392 632 275 countryhousecompany.co.uk



BLINDS AWNINGS SHUTTERS

We offer an expert measuring, manufacturing and installation service with a
FULL 5 YEAR GUARANTEE

Our other services include awning
and canopy restoration,
including re-covering,
and blind servicing and repair.

Call us for a
FREE
no obligation
quote



WINCHESTER
BLINDS & SHUTTERS

Tel: 01962 736 836 or 07711 007 079

info@winchesterblinds.com www.winchesterblinds.com



Hellards

*At home
in Hampshire*

Successfully selling and
letting property in
The Itchen Valley
since 1988.



Sales | Property Management | Lettings

11 Broad Street, Alresford | www.hellards.co.uk

01962 736333

alresford@hellards.co.uk